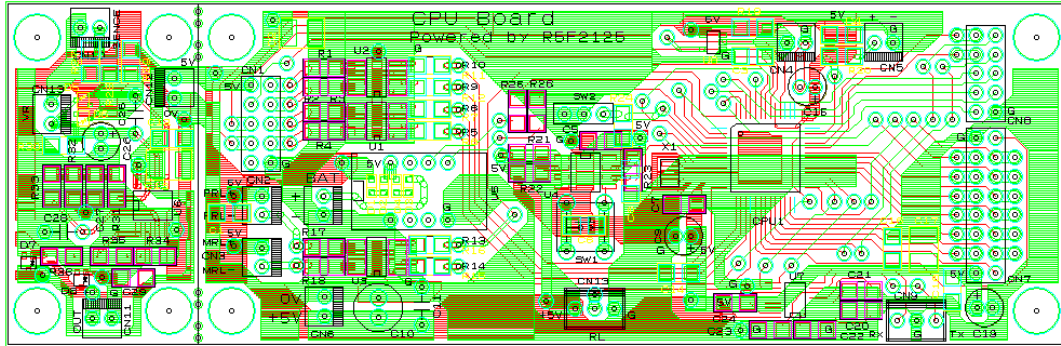


CPU Board

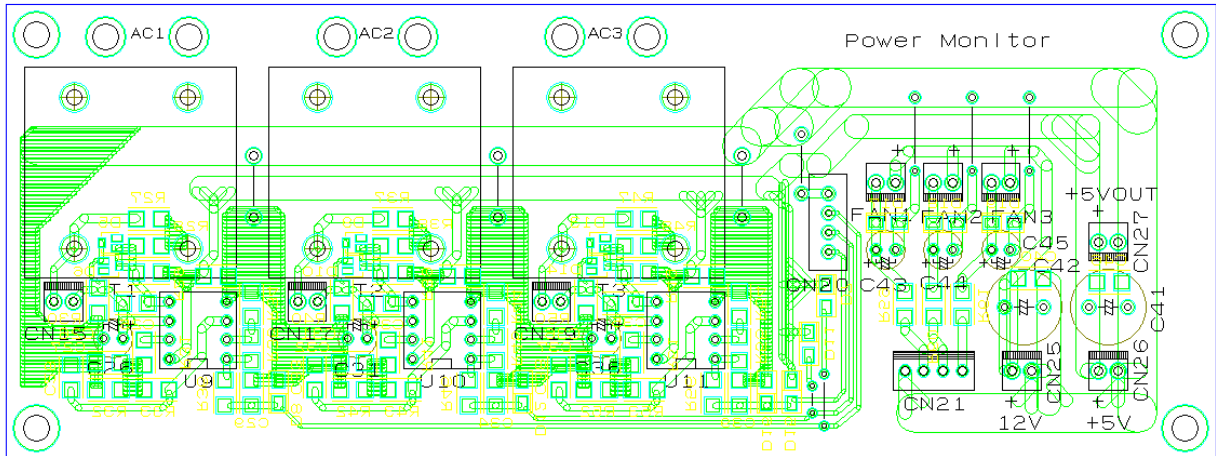
45mm x 140mm



5V	CN1	RL4	P27-13	GND	CNT	RCM	P22-18	P04-36	LED1	CN5	REB	P21-19
P61-47	CS	RL3	P26-14	P44-7	BKMP	CNTLST	P46-27	P65-35	LED2	REA	P20-20	
P62-46	SD1	RL2	P25-15	P30-34	R/W	RE	P33-3	P43-06	COLSEL	SW4	P02-49	
P60-45	SCLK	RL1	P24-16	P10-32	DB0	E	P31-33	P03-48	SW3	SW2	P01-50	
NC	GND			P12-30	DB2	DB1	P11-31	P00-51	SW1	GND		
				P14-24	DB4	DB3	P13-25					
				P16-22	DB6	DB5	P15-23					
				5V	DB7	P17-21						

Power Monitor Board

160mm x 60mm



Front Board

135mm x 36mm

